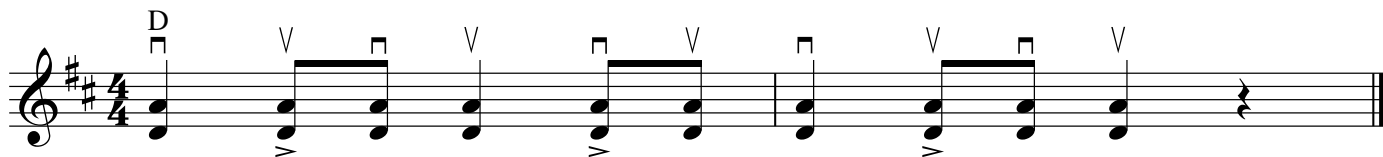


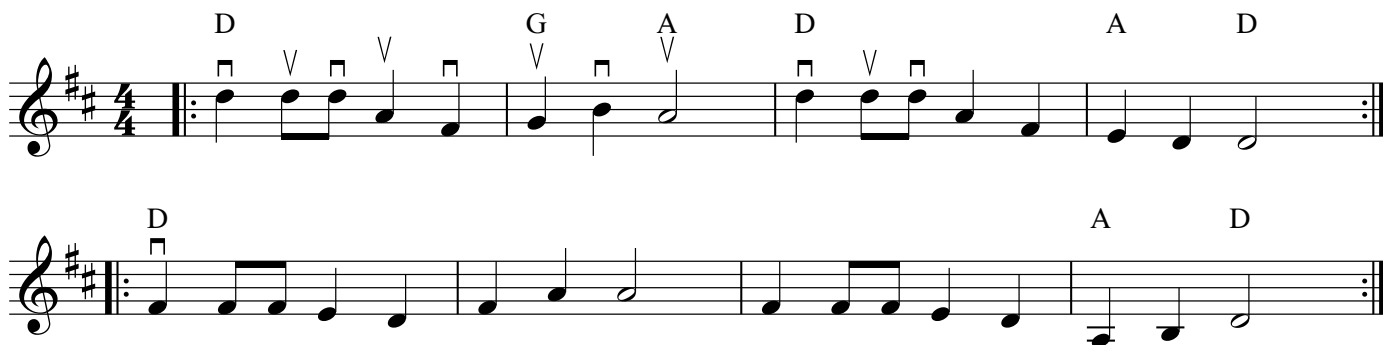
## Cripple Creek Building Blocks

Jenny Peters

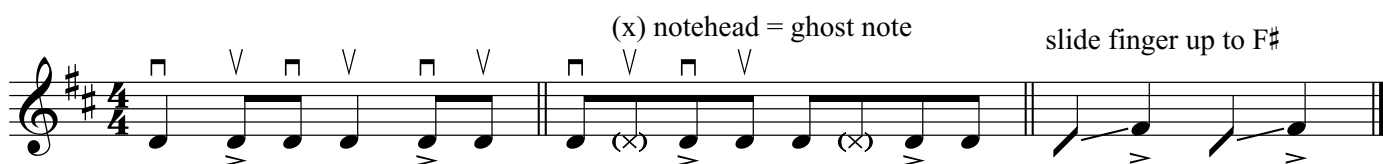
## 1. Kick-Off



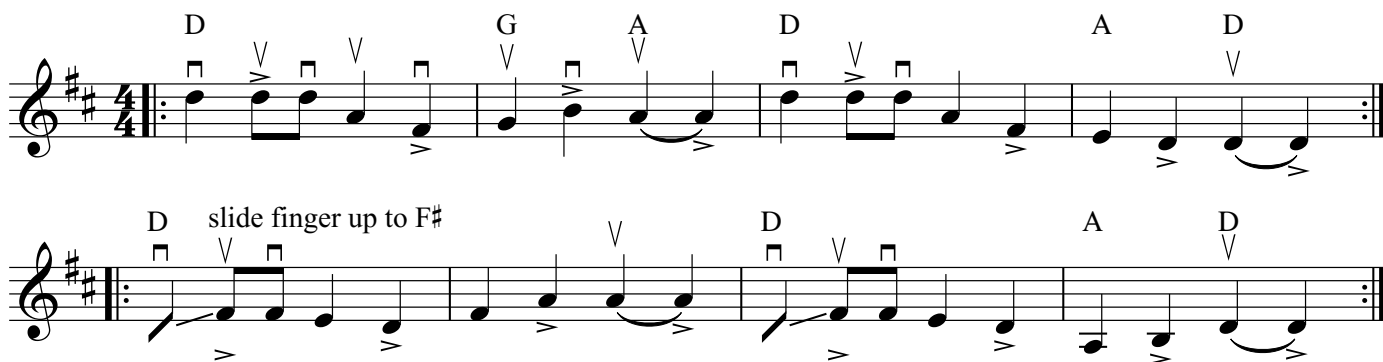
## 2. Tune



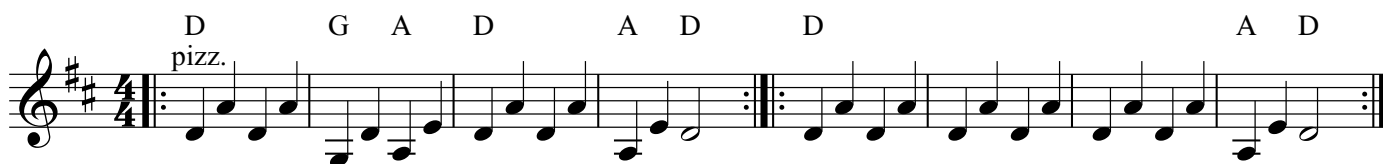
## 3. Rhythmic Improvisation Ideas



## 4. Tune With Rhythmic "Fiddle" Feel



## 5. Bass Line



## 6. Back-Up - Chopping

Bow at the frog for pitched chops

Two staves of music in D major, 4/4 time. The first staff contains six measures with notes D, G, A, D, A, and D. The second staff contains four measures with notes D, A, and D. Above the notes are square symbols indicating a chopping bowing technique. The first staff is annotated with 'Bow at the frog for pitched chops'.

## 7. Break - Shuffle Style

Two staves of music in D major, 4/4 time. The first staff contains six measures with notes D, G, A, D, A, and D. The second staff contains four measures with notes D, A, and D. Above the notes are 'v' marks indicating a shuffle bowing technique. The second staff has a first and second ending bracket over the final two measures.

## 8. Shuffle Break with Double Stops

Two staves of music in D major, 4/4 time. The first staff contains six measures with notes D, G, A, D, A, and D. The second staff contains four measures with notes D, A, and D. Above the notes are 'v' marks indicating double stops. The second staff has a first and second ending bracket over the final two measures.

## 9. Tag

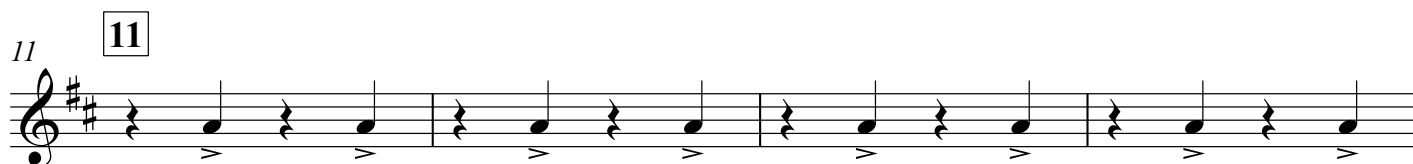
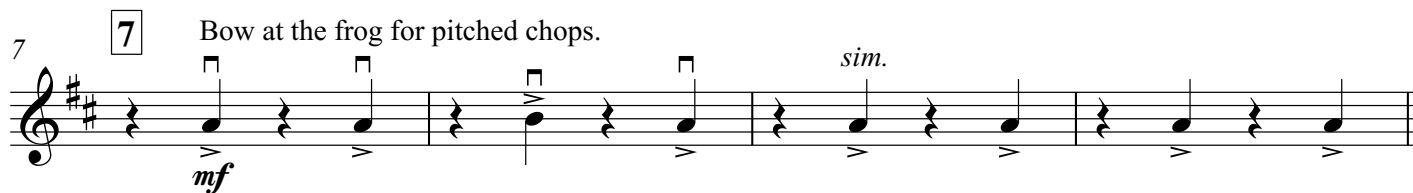
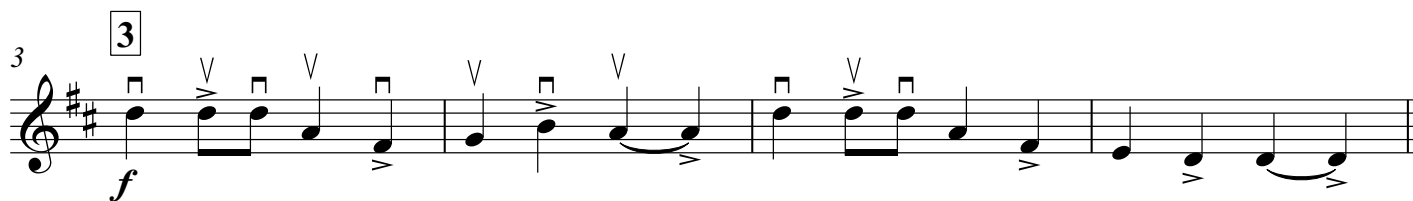
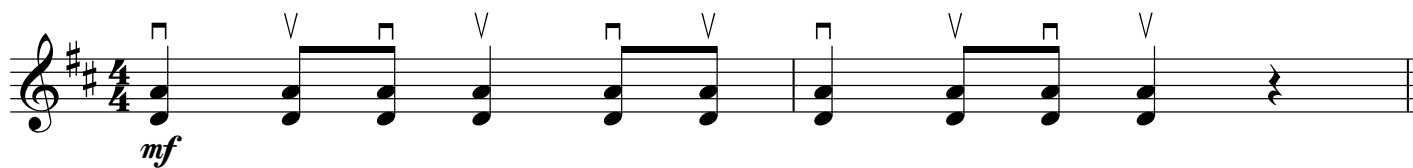
One staff of music in D major, 4/4 time. The staff contains five measures with notes D, G, D, A, and D.

Violin I

# Cripple Creek

## String Orchestra Arrangement

Jenny Peters



23 23

mf

Violin I staff, measures 23-26. The key signature is two sharps (F# and C#). The staff contains a sequence of eighth notes, each preceded by a fermata. The notes are: G4 (half note), A4 (quarter note), B4 (quarter note), C#5 (quarter note), D5 (quarter note), E5 (quarter note), F#5 (quarter note), G5 (quarter note). The dynamic marking *mf* is placed below the first measure.

27 27

p

Violin I staff, measures 27-30. The key signature is two sharps (F# and C#). The staff contains a sequence of eighth notes, each preceded by a fermata. The notes are: G4 (half note), A4 (quarter note), B4 (quarter note), C#5 (quarter note), D5 (quarter note), E5 (quarter note), F#5 (quarter note), G5 (quarter note). The dynamic marking *p* is placed below the first measure.

31 31

mf

Violin I staff, measures 31-34. The key signature is two sharps (F# and C#). The staff contains a sequence of eighth notes, each preceded by a fermata. The notes are: G4 (half note), A4 (quarter note), B4 (quarter note), C#5 (quarter note), D5 (quarter note), E5 (quarter note), F#5 (quarter note), G5 (quarter note). The dynamic marking *mf* is placed below the first measure.

35 35

f

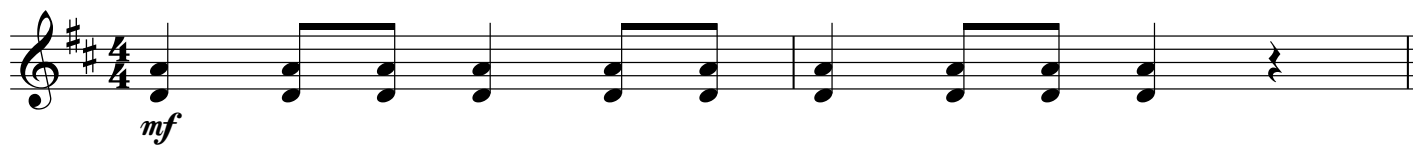
Violin I staff, measures 35-38. The key signature is two sharps (F# and C#). The staff contains a sequence of eighth notes, each preceded by a fermata. The notes are: G4 (half note), A4 (quarter note), B4 (quarter note), C#5 (quarter note), D5 (quarter note), E5 (quarter note), F#5 (quarter note), G5 (quarter note). The dynamic marking *f* is placed below the first measure.

Violin I

# Cripple Creek

String Orchestra Arrangement

Jenny Peters



23 23

mf

Violin I staff, measures 23-26. The key signature has two sharps (F# and C#). The staff contains four measures of music. Each measure begins with a quarter rest, followed by a quarter note. The notes are G4, A4, B4, and C#5 in descending order. The first measure has a *mf* dynamic marking. Each note has a small upward-pointing accent mark.

27 27

p

Violin I staff, measures 27-30. The key signature has two sharps (F# and C#). The staff contains four measures of music. Each measure begins with a quarter note, followed by a quarter rest, and then a whole rest. The notes are G4, A4, B4, and C#5 in descending order. The first measure has a *p* dynamic marking. Each note has a small upward-pointing accent mark.

31 31

mf

Violin I staff, measures 31-34. The key signature has two sharps (F# and C#). The staff contains four measures of music. Each measure begins with a quarter rest, followed by a quarter note. The notes are G4, A4, B4, and C#5 in descending order. The first measure has a *mf* dynamic marking. Each note has a small upward-pointing accent mark.

35 35

f

Violin I staff, measures 35-38. The key signature has two sharps (F# and C#). The staff contains four measures of music. The first measure has a *f* dynamic marking. The notes are G4, A4, B4, and C#5 in descending order. The first measure has a *f* dynamic marking. The first measure has a *f* dynamic marking. The first measure has a *f* dynamic marking. The first measure has a *f* dynamic marking.